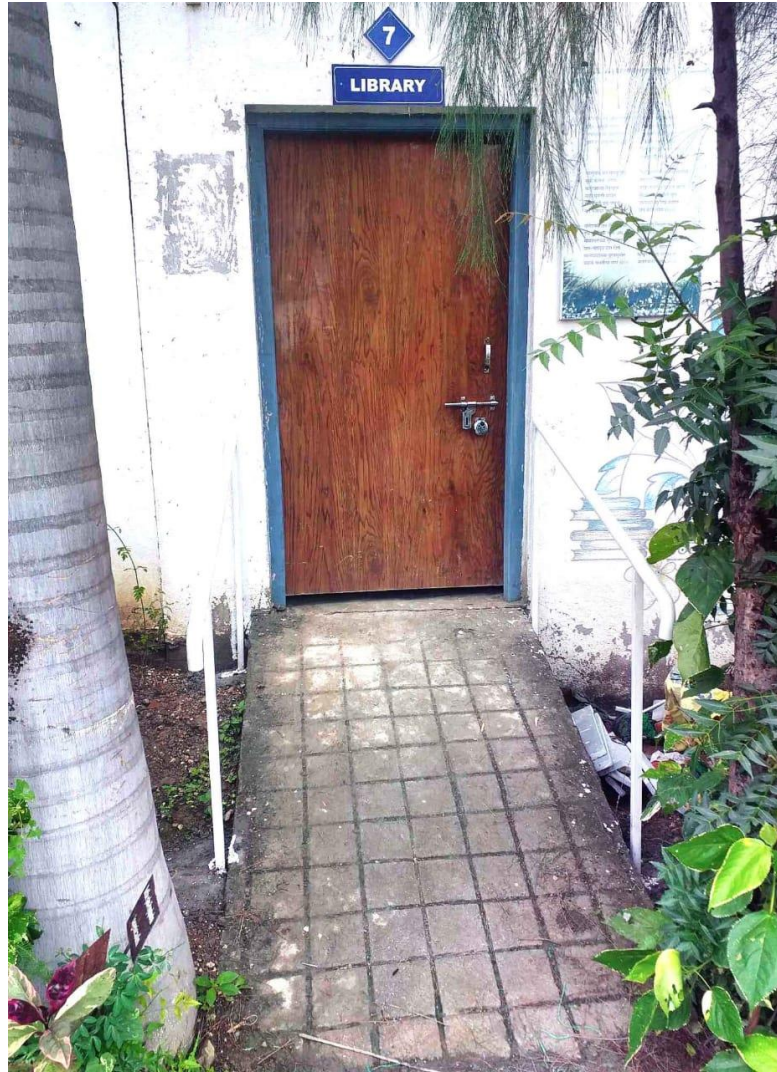




7.1.7 - The Institution has disabled-friendly, barrier free environment

- 1. Built environment with ramps/lifts for easy access to classrooms.**
- 2. Signage including tactile path, lights, display boards and signposts**



Ramp for the disable pearsons



PHJ5+H77, Ghatnandur, Maharashtra 431519, India

Ghatnandur
Maharashtra
India

2022-09-11(Sun) 12:29(PM)

23°C
73°F

Ramp for the disable persons



Parking Sign Board



Parked Vehicles